

# MONTHLY MEMBERSHIP PROGRESS REPORT

District 49 B

Results as of: 10/31/2025

GMT:

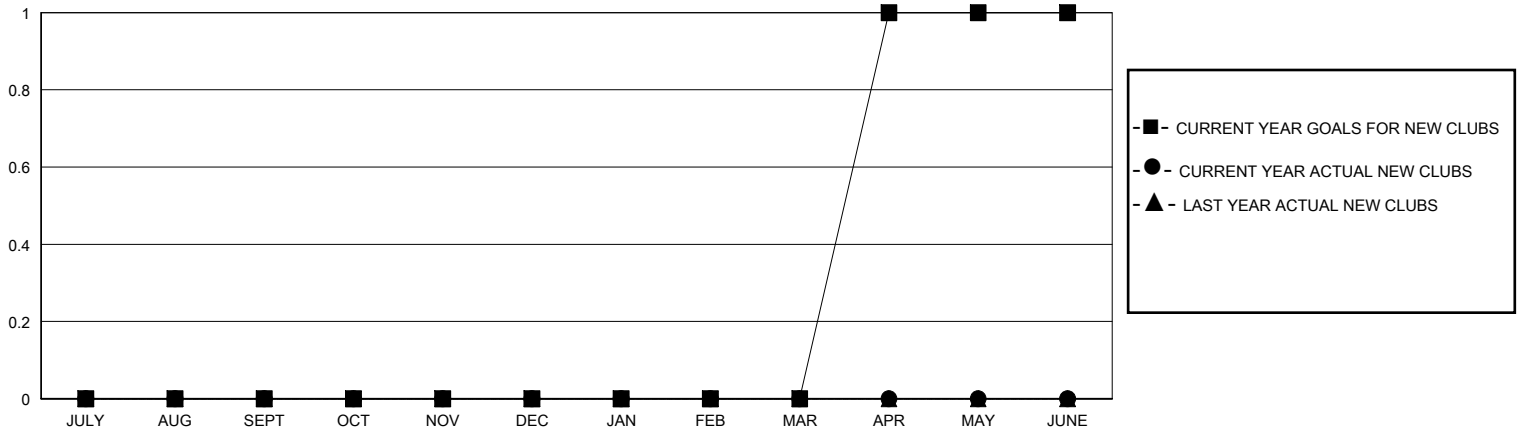
LOCATION ALASKA

GMT CA

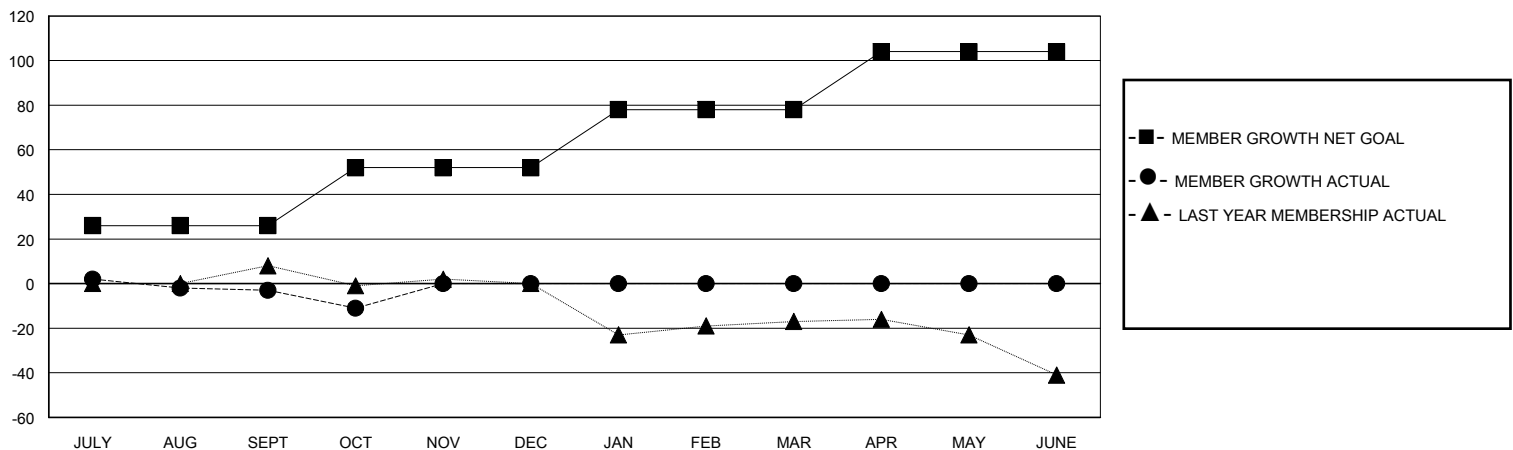
Clubs			
RESULTS FOR 2025-2026			
QUARTER	NEW CLUB GOAL	NEW CLUBS	DROPPED CLUBS
JULY/AUG/SEPT	0	0	0
OCT/NOV/DEC	0	0	0
JAN/FEB/MAR	0	0	0
APR/MAY/JUNE	1	0	0

Members			
RESULTS FOR 2025-2026			
QUARTER	MEMBER GROWTH NET GOAL	MEMBER GROWTH ACTUAL	DROPPED MEMBERS ACTUAL (including transfers)
JULY/AUG/SEPT	26	10	12
OCT/NOV/DEC	26	8	13
JAN/FEB/MAR	26	0	0
APR/MAY/JUNE	26	0	0

GOALS AND ACTUAL NEW CLUBS CUMULATIVE



GOALS AND ACTUAL MEMBERS CUMULATIVE



DROPPED CLUBS: 0

6 CLUBS OF 26 ADDED 1 OR MORE NEW MEMBERS

## GENDER DISTRIBUTION

MALE 395 (56.67%)  
FEMALE 302 (43.33%)

## DROPPED MEMBERS

DECEASED	4
CLUB CANCELLED	0
OTHER	21
<b>TOTAL</b>	<b>25</b>

[CLICK HERE FOR CUMULATIVE MEMBERSHIP DATA](#)

TOTAL FAMILY UNIT MEMBERS	149
FAMILY MEMBERS PAYING HALF DUES	77